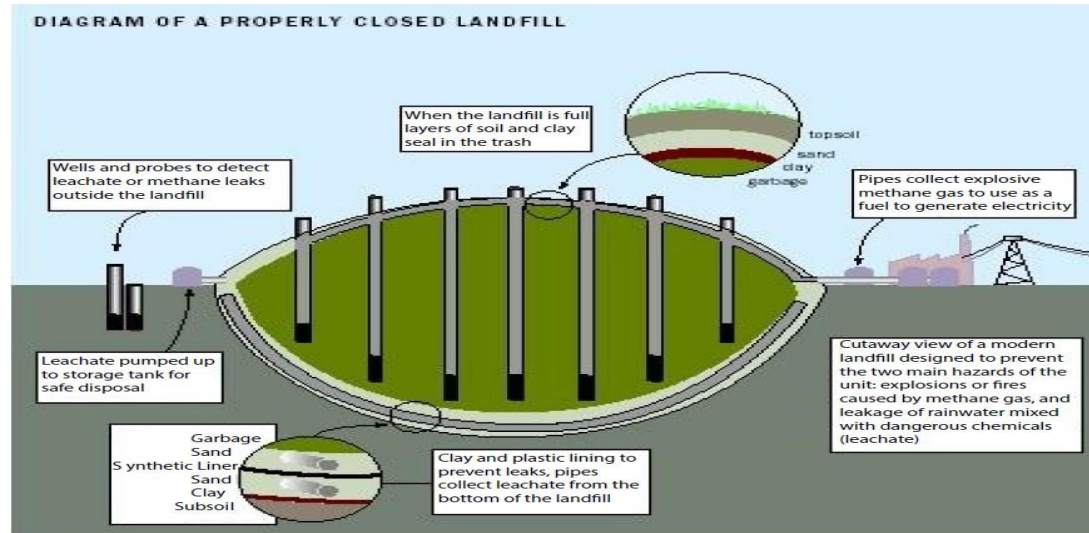


- **Modern landfills**

- are well-engineered and managed facilities
- designed to protect the environment from contaminants, which may be present in the waste stream
- **cannot be built in environmentally-sensitive areas**
- placed using on-site environmental monitoring systems

<https://www.epa.gov/landfills/basic-information-about-landfills>



- **During the 1960s, there were minimal environmental regulations regarding landfills and their closure protocol.**

<https://www.epa.gov/norwood/what-year-was-landfill-closed-what-if-any-regulations-would-landfill-have-complied>

- The [Resource Conservation and Recovery Act \(RCRA\)](#) is our nation's primary law governing the disposal of solid and hazardous waste was signed into law on October 21, 1976.
- RCRA has been amended on two occasions:
  - Federal Facility Compliance Act of 1992 – strengthened enforcement of RCRA at federal facilities.
  - Land Disposal Program Flexibility Act of 1996 – provided regulatory flexibility for land disposal of certain wastes.

<https://www.epa.gov/rcra/history-resource-conservation-and-recovery-act-rcra>

**6800 Kilmer St Landfill was closed prior to the RCRA and is not subject to Federal Legislation.**

